

# NIPRESS

PRESSURE SWITCHES, PRESSURE TRANSMITTERS  
AND DIFFERENTIAL PRESSURE TRANSMITTERS

3 YEARS WARRANTY

35 YEARS  
ANNIVERSARY

**TIVELCO**

PRESSURE SENSORS



## PRESSURE SWITCHES

### PRODUCT

#### DK-100

#### DK-200

#### DK-300

### FEATURES

- Silicon inner diaphragm
- Relative pressure measurement
- Configurable via PC or programming device
- 1 or 2 PNP output

- Ceramic inner diaphragm
- Relative or absolute pressure measurement
- Configurable via PC or programming device
- 1 or 2 PNP output

- Stainless steel inner or flush diaphragm
- Relative or absolute pressure measurement
- Up to 4 switch outputs
- Rotatable and configurable 4-digit LED display module

### APPLICATION

- Ideal for pneumatic and vacuum applications
- Mechanical and plant engineering
- HVAC

- Ideal for hydraulic and mechanical engineering applications for measuring, control and process technology
- Mechanical and plant engineering
- Energy industry
- Hydraulics

- Mechanical and plant engineering
- HVAC
- Environmental engineering

### SPECIFICATION

**Sensor:** silicon  
**Nominal pressure gauge:**  
 0 - 10 bar (0 - 145 psig)  
**Accuracy:** 1%  
**Medium temperature:**  
 -25 °C ... +85 °C  
 (-13 °F ... +185 °F)  
**Ambient temperature:**  
 -40 °C ... +85 °C  
 (-40 °F ... +185 °F)  
**Output:**  
 1 or 2 PNP switch output  
**Process connection:**  
 1/8" BSP internal thread  
**Protection:** IP54

**Sensor:** ceramic  
**Nominal pressure gauge:**  
 0 - 400 bar (0 - 5800 psig)  
**Accuracy:** 1%  
**Medium temperature:**  
 -25 °C ... +85 °C  
 (-13 °F ... +185 °F)  
**Ambient temperature:**  
 -25 °C ... +85 °C  
 (-13 °F ... +185 °F)  
**Output:**  
 1 or 2 PNP switch output  
**Process connection:**  
 1/4" BSP  
**Protection:** IP67

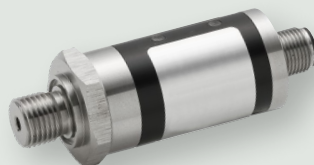
**Sensor:** stainless steel  
**Nominal pressure gauge:**  
 0 - 600 bar (0 - 8700 psig)  
**Accuracy:** 0.25 / 0.5%  
**Medium temperature:**  
 -40 °C ... +125 °C  
 (-40 °F ... +257 °F)  
**Ambient temperature:**  
 -40 °C ... +85 °C  
 (-40 °F ... +185 °F)  
**Output:**  
 1 - 2 - 4 PNP switch output  
**Process connection:**  
 1/4", 1/2", 3/4" BSP (with flush membrane); 1/4", 1/2" NPT  
**Protection:** IP65, IP68

### OPTIONS

- 1 - 5 V analogue output

- Oxygen application
- Oil- and grease free application

- Ex ia version\*
- Analogue 4 - 20 mA output
- Integral cable version



## PRESSURE SWITCHES

### DK-400

- Welded stainless steel flush diaphragm
- Relative or absolute pressure measurement
- Up to 4 switch outputs
- Rotatable and configurable 4-digit LED display module

- Ideal for viscous and pasty media
  - Food and beverage industry
  - Medical technology
  - Pharmaceutical industry

**Sensor:** stainless steel  
**Nominal pressure gauge:** 0 - 40 bar (0 - 580 psig)  
**Accuracy:** 0,25 / 0,5%  
**Medium temperature:** -40 °C ... +125 °C (-40 °F ... +257 °F)  
**Ambient temperature:** -40 °C ... +85 °C (-40 °F ... +185 °F)  
**Output:** 1 - 2 - 4 PNP switch output  
**Process connection:** 1/2", 3/4", 1" BSP; 3/4", 1 1/2" 2" Triclamp; Dairy pipe DN25, DN40, DN50, DN40/50 VARIVENT  
**Protection:** IP65, IP68

- Ex ia version\*
- Analogue 4 - 20 mA output
- Integral cable version



### DK-500

- Welded stainless steel inner diaphragm
- Relative or absolute pressure measurement
- Stainless steel housing
- 1 or 2 PNP output
- Rotatable and configurable 4-digit LED display module

- Mechanical and plant engineering
- HVAC
- Environmental engineering

**Sensor:** stainless steel  
**Nominal pressure gauge:** 0 - 600 bar (0 - 8700 psig)  
**Accuracy:** 0.25 / 0.5%  
**Medium temperature:** -40 °C ... +125 °C (-40 °F ... +257 °F)  
**Ambient temperature:** -40 °C ... +85 °C (-40 °F ... +185 °F)  
**Output:** 1 or 2 PNP switch output  
**Process connection:** 1/4", 1/2" BSP; 1/4", 1/2" NPT  
**Protection:** IP67

- Ex ia version\*
- Analogue 4 - 20 mA output



### DK-600

- Ceramic internal diaphragm
- Relative or absolute pressure measurement
- Robust, stainless steel housing
- 1 or 2 PNP output
- Rotatable and configurable 4-digit LED display module

- For rough conditions and difficult conditions
- Mechanical and plant engineering
- Environmental engineering

**Sensor:** ceramic  
**Nominal pressure gauge:** 0 - 600 bar (0 - 8700 psig)  
**Accuracy:** 0.5%  
**Medium temperature:** -40 °C ... +125 °C (-40 °F ... +257 °F)  
**Ambient temperature:** -40 °C ... +85 °C (-40 °F ... +185 °F)  
**Output:** 1 or 2 PNP switch output  
**Process connection:** 1/4", 1/2" BSP; 1/4", 1/2" NPT  
**Protection:** IP67

- Ex ia version\*
- Analogue 4 - 20 mA output
- PVDF process connection



### DK-700

- Welded stainless steel flush diaphragm
- Relative or absolute pressure measurement
- 1 or 2 PNP output
- Rotatable and configurable 4-digit LED display module

- Ideal for high hygienic applications
- Food and beverage industry
- Pharmaceutical industry

**Sensor:** stainless steel  
**Nominal pressure gauge:** 0 - 40 bar (0 - 580 psig)  
**Accuracy:** 0.25 / 0.5%  
**Medium temperature:** -40 °C ... +125 °C (-40 °F ... +257 °F)  
**Ambient temperature:** -40 °C ... +85 °C (-40 °F ... +185 °F)  
**Output:** 1 or 2 PNP switch output  
**Process connection:** 1/2", 3/4", 1" BSP; 3/4", 1 1/2", 2" Triclamp; Dairy pipe DN25, DN40, DN50, DN40/50 VARIVENT  
**Protection:** IP67

- Ex ia version\*
- High temperature version
- Analogue 4 - 20 mA output



## PRESSURE TRANSMITTERS

### D-200

- Ceramic internal diaphragm for overpressure measurement
- Relative pressure measurement
- Ideal for measuring aggressive mediums – gases, steam, fluids
- Not suggested to use directly with mediums tending to sedimentation, crystallization or solidification
- Mechanical and plant engineering
- Hydraulics
- HVAC

**Sensor:** ceramic  
**Nominal pressure gauge:**  
 0 – 400 bar (0 – 5800 psig)  
**Accuracy:** 0.5%  
**Medium temperature:**  
 -25 °C ... +125 °C  
 (-13 °F ... +257 °F)  
**Ambient temperature:**  
 -25 °C ... +85 °C  
 (-13 °F ... +185 °F)  
**Output:**  
 4 – 20 mA, 0 – 10V  
**Process connection:**  
 1/4", 1/2" BSP;  
 1/4" NPT  
**Protection:** IP65, IP67

- Oil- and grease free version

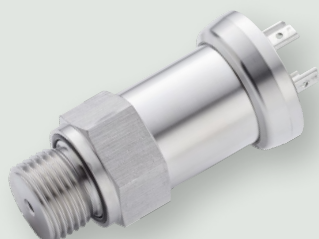


### D-300

- Stainless steel internal diaphragm
- Relative or absolute pressure measurement
- For static or dynamic measurement
- Not suggested to use directly with mediums tending to sedimentation, crystallization or solidification
- Mechanical and plant engineering
- Refrigeration engineering
- Hydraulics
- Energy industry
- Environmental engineering
- HVAC

**Sensor:** stainless steel  
**Nominal pressure gauge:**  
 0 – 600 bar (0 – 8700 psig)  
**Accuracy:**  
 0.1 / 0.25 / 0.5%  
**Medium temperature:**  
 -40 °C ... +125 °C  
 (-40 °F ... +257 °F)  
**Ambient temperature:**  
 -40 °C ... +85 °C  
 (-40 °F ... +185 °F)  
**Output:** 4 – 20 mA, 0 – 10V  
**Process connection:**  
 1/4", 1/2" BSP;  
 1/4", 1/2" NPT  
**Protection:** IP65, IP67, IP68

- Ex ia version\*
- SIL 2\*
- Integral cable version
- Absolute pressure measurement (over 0.4 bar; 5.8 psig)



### D-400

- Stainless steel flush diaphragm
- Relative or absolute pressure measurement (absolute pressure over 0.6 bar; 8.7 psig)
- Vacuum resistant
- Sensor with low surface roughness
- Ideal for pressure measurement of contaminated mediums and at the bottom (level)
- Food and beverage industry
- Pharmaceutical industry
- Mechanical and plant engineering

**Sensor:** stainless steel  
**Nominal pressure gauge:**  
 0 – 400 bar (0 – 5800 psig)  
**Accuracy:** 0.25 / 0.5%  
**Medium temperature:**  
 -40 °C ... +125 °C  
 (-40 °F ... +257 °F)  
**Ambient temperature:**  
 -40 °C ... +85 °C  
 (-40 °F ... +185 °F)  
**Output:** 4 – 20 mA, 0 – 10V  
**Process connection:**  
 1/2", 3/4", 1" BSP;  
 3/4", 1 1/2", 2" Triclam; DN25, DN40/50 sanitary DN40/50 VARIVENT  
**Protection:** IP65, IP67, IP68

- Ex ia\* version
- SIL 2\*
- High temperature version
- Integral cable version
- Hygienic version



### D-500

- Ceramic flush diaphragm
- Relative or absolute pressure measurement
- For the measurement of pasty, polluted or aggressive media
- For oxygen applications at low pressure range
- Mechanical and plant engineering
- Energy industry
- Medical technology
- Environmental engineering

**Sensor:** ceramic  
**Nominal pressure gauge:**  
 0 – 600 bar (0 – 8700 psig)  
**Accuracy:** 0.5%  
**Medium temperature:**  
 -40 °C ... +125 °C  
 (-40 °F ... +257 °F)  
**Ambient temperature:**  
 -40 °C ... +85 °C  
 (-40 °F ... +185 °F)  
**Output:** 4 – 20 mA, 0 – 10V  
**Process connection:**  
 1/4", 1/2" BSP;  
 1/4", 1/2" NPT  
**Protection:**  
 IP65, IP67, IP68

- Ex ia version\*
- Oxygen application
- SIL 2\*
- PVDF process connection
- Integral cable version



## PRESSURE TRANSMITTERS

### D-600

- Ceramic flush diaphragm
- Relative pressure measurement

- Preferred media: water, fuels and oils, sewage, aggressive media
  - Ideal for more viscous or polluted media
  - Mechanical and plant engineering
- Energy industry
- Medical technology
- Environmental engineering

**Sensor:** ceramic

**Nominal pressure gauge:**

0 - 60 bar (0 - 870 psig)

**Accuracy:** 0.5%

**Medium temperature:**

-40 °C ... +125 °C

(-40 °F ... +257 °F)

**Ambient temperature:**

-25 °C ... +85 °C

(-13 °F ... +185 °F)

**Output:** 4 - 20 mA, 0 - 10V

**Process connection:**

¾" BSP

**Protection:** IP65, IP67, IP68

- Ex ia version\*
- SIL 2\*
- PVDF process connection (for aggressive media)
- Integral cable version



### D-700

- Ceramic flush diaphragm
- Relative pressure measurement
- Ideal for measuring small system pressure

- Preferred media: water, fuels and oils, aggressive media, pasty or viscous media
- Mechanical and plant engineering
- Laboratory
- Environmental engineering

**Sensor:** ceramic

**Nominal pressure gauge:**

0 - 20 bar (0 - 290 psig)

**Accuracy:** 0.25 / 0.5 / 1%

**Medium temperature:**

-40 °C ... +125 °C

(-40 °F ... +257 °F)

**Ambient temperature:**

-40 °C ... +85 °C

(-40 °F ... +185 °F)

**Output:** 4 - 20 mA, 0 - 10V

**Process connection:**

½" BSP

**Protection:** IP65, IP67, IP68

- Ex ia version\*
- PVDF or stainless-steel process connection
- 99.9% aluminium oxide ceramic sensor
- Teflon coating
- Integral cable version



### D-800

- Stainless steel flush diaphragm
- Relative pressure measurement
- Robust construction
- Modular construction

- Preferred media: water, fuels and oils
- Mechanical and plant engineering
- Energy industry
- Environmental engineering

**Sensor:** stainless steel

**Nominal pressure gauge:**

0 - 40 bar (0 - 580 psig)

**Accuracy:** 0.1 / 0.25 / 0.5%

**Medium temperature:**

-40 °C ... +125 °C

(-40 °F ... +257 °F)

**Ambient temperature:**

-40 °C ... +85 °C

(-40 °F ... +185 °F)

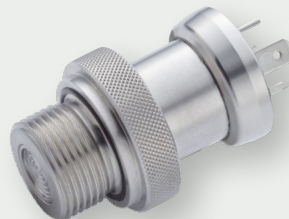
**Output:** 4 - 20 mA, 0 - 10V

**Process connection:**

¾" BSP

**Protection:** IP65, IP67, IP68

- Ex ia version\*
- SIL 2\*
- Integral cable version



### D-900

- Ceramic internal diaphragm
- Relative or absolute pressure measurement
- Ideal for measuring small system pressure
- High overpressure resistance and a high temperature and media resistance

- Preferred media: water, gases, fuels and oils
- Mechanical and plant engineering
- Energy industry
- HVAC
- Laboratory
- Environmental engineering

**Sensor:** ceramic

**Nominal pressure gauge:**

0 - 20 bar (0 - 290 psig)

**Accuracy:** 0.25 / 0.5%

**Medium temperature:**

-40 °C ... +125 °C

(-40 °F ... +257 °F)

**Ambient temperature:**

-40 °C ... +85 °C

(-40 °F ... +185 °F)

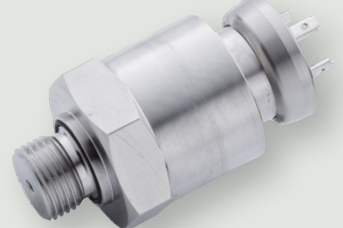
**Output:** 4 - 20 mA, 0 - 10V

**Process connection:**

½" BSP, ½" NPT

**Protection:** IP65, IP67, IP68

- Ex ia version\*
- 99.9% aluminium oxide ceramic sensor
- Integral cable version



## PRESSURE TRANSMITTERS

### D-A00

- Stainless steel internal or flush diaphragm
- Relative or absolute pressure measurement
- Two chamber aluminium die cast case or stainless housing
- Turn-down 1:10
- HART® communication

- Absolute measurement of gases and steam up to 600 bar (8700 psig)
- Ideal for process, food and pharmaceutical industry
- Mechanical and plant engineering
- Chemical industry
- Paper industry
- Oil and gas industry

**Sensor:** stainless steel  
**Nominal pressure gauge:**  
 0 - 600 bar (0 - 8700 psig)  
**Accuracy:** 0.1%  
**Medium temperature:**  
 -40 °C ... +125 °C  
 (-40 °F ... +257 °F)  
**Ambient temperature:**  
 -40 °C ... +80 °C (without display)  
 (-40 °F ... +176 °F)  
 -20 °C ... +70 °C (with display)  
 (-4 °F ... +158 °F)  
**Output:** 4 - 20 mA, HART®  
**Process connection:**  
 ½", 1", 1½" BSP; ½" NPT;  
 DN25/PN40, DN50/PN40,  
 DN80/PN40, 2" RF, 3" RF  
**Protection:** IP67

- Display and operating module
- Ex d version\*
- High temperature version (300 °C; 572 °F)



### D-B00

- Ceramic flush diaphragm
- 99.9% aluminium oxide ceramic sensor, high overpressure capability
- Relative pressure measurement
- Two chamber aluminium die cast case or stainless housing
- Turn-down 1:5
- HART® communication

- Relative measurement of gases, steam and fluids
- Mechanical and plant engineering
- Chemical industry
- Medical technology
- Food and beverage industry
- Paper industry
- Environmental engineering

**Sensor:** ceramic  
**Nominal pressure gauge:**  
 0 - 20 bar (0 - 290 psig)  
**Accuracy:** 0.1 / 0.2%  
**Medium temperature:**  
 -25 °C ... +125 °C  
 (-13 °F ... +257 °F)  
**Ambient temperature:**  
 -40 °C ... +70 °C (without display)  
 (-40 °F ... +158 °F)  
 -20 °C ... +70 °C (with display)  
 (-4 °F ... +158 °F)  
**Output:** 4 - 20 mA, HART®  
**Process connection:**  
 ½", 1", 1½" BSP; ½" NPT;  
 DN25/PN40, DN50/PN40,  
 DN80/PN40, 2" RF, 3" RF  
**Protection:** IP67

- Display and operating module
- Ex ia version\*
- Ex d version\*



### D-C00

- Welded stainless steel internal diaphragm
- Relative pressure measurement
- Extreme pressure resistance (up to 2000 bar; 29007 psig)
- Welded thinfilm sensor
- High reliability
- Easy handling

- Ideal for high pressure hydraulic applications
- Mechanical and plant engineering
- Laboratory
- Hydraulics

**Sensor:** stainless steel  
**Nominal pressure gauge:**  
 0 - 2000 bar (0 - 29007 psig)  
**Accuracy:** 0.5%  
**Medium temperature:**  
 -40 °C ... +140 °C  
 (-40 °F ... +284 °F)  
**Ambient temperature:**  
 -25 °C ... +85 °C  
 (-13 °F ... +185 °F)  
**Output:** 4 - 20 mA, 0 - 10V  
**Process connection:**  
 1½" BSP;  
 M20 x1.5 internal thread  
**Protection:** IP65, IP67

- Ex ia version\*
- Adjustability of span and offset
- Integral cable version



### DD-100

- Silicon inner diaphragm
- Relative pressure measurement
- Can be used in 2- or 3-wire system
- Wall-mounted

- For differential pressure measurement of gases and compressed air
- Mechanical and plant engineering
- HVAC

**Sensor:** silicon  
**Nominal pressure gauge:**  
 0 - 1 bar (0 - 14 psig)  
**Accuracy:** 1%  
**Medium temperature:**  
 (+32 °F ... +122 °F)  
 0 °C ... +50 °C  
**Ambient temperature:**  
 0 °C ... +50 °C  
 (+32 °F ... +122 °F)  
**Output:** 4 - 20 mA, 0 - 10V  
**Process connection:**  
 Ø6.6 x 11 mm  
 (for flexible tubes Ø6)  
 Ø4.45 x 10 mm  
 (for flexible tubes Ø4)  
**Protection:** IP54

- 5-digit LCD display



## DIFFERENTIAL PRESSURE TRANSMITTERS

### DD-200

- Stainless steel diaphragm
- Relative pressure measurement
- Aluminium die cast housing
- Turn-down 1:10
- HART® communication

- Differential pressure measurement of closed, pressurized tanks
  - Mechanical and plant engineering
  - Oil and gas industry
- Chemical industry
- Energy industry
- HVAC
- Food and beverage industry
- Paper industry

**Sensor:** stainless steel  
**Nominal pressure gauge:**  
 0 - 20 bar (0 - 290 psig)  
**Accuracy:** 0.1%  
**Medium temperature:**  
 -40 °C ... +85 °C  
**Ambient temperature:**  
 -40 °C ... +50 °C (without display)  
 (-40 °F ... +122 °F)  
 -20 °C ... +50 °C (with display)  
 (-4 °F ... +122 °F)  
**Output:** 4 - 20 mA, HART®  
**Process connection:**  
 1/4" NPT (internal)  
**Protection:** IP67

- Display and operating module
- HASTELLOY® C-276 sensor
- EPDM sealing



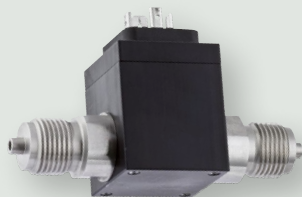
### DD-300

- Stainless steel internal diaphragm
- Relative pressure measurement
- Can be pressurized on both sides with fluids or gases
- Mechanical robust and reliable at dynamic pressure as well as shock and vibration
- Differential pressure wet/wet

- Compact design
- Mechanical and plant engineering
- Energy industry

**Sensor:** stainless steel  
**Nominal pressure gauge:**  
 0 - 16 bar (0 - 232 psig)  
**Accuracy:** 0.5%  
**Medium temperature:**  
 -25 °C ... +125 °C  
 (-13 °F ... +257 °F)  
**Ambient temperature:**  
 -25 °C ... +85 °C  
 (-13 °F ... +185 °F)  
**Output:** 4 - 20 mA, 0 - 10V  
**Process connection:**  
 1/4" BSP (internal), 1/2" BSP;  
 7/16" UNF  
**Protection:** IP65

- Ex ia version\*



### DD-400

- Two stainless steel internal diaphragm
- Relative pressure measurement
- Display and process connection
- Up to 2 switch outputs

- For differential pressure measurement of gases and fluids
- Mechanical and plant engineering
- Chemical industry
- Energy industry
- HVAC
- Food and beverage industry

**Sensor:** stainless steel  
**Nominal pressure gauge:**  
 0 - 70 bar (0 - 1015 psig)  
**Accuracy:** 1%  
**Medium temperature:**  
 -40 °C ... +125 °C  
 (-40 °F ... +257 °F)  
**Ambient temperature:**  
 -25 °C ... +85 °C  
 (-13 °F ... +185 °F)  
**Output:** 4 - 20 mA  
**Process connection:**  
 1/4", 1/2" BSP;  
 1/4", 1/2" NPT  
**Protection:** IP65



### DD-500

- Stainless steel diaphragm
- Relative pressure measurement
- Maximum static overpressure 400 bar (5800 psig)
- Turn-down: up to 1:100
- High accuracy
- Aluminium die cast housing
- HART® communication

- Differential pressure measurement of closed, pressurized tanks
- Oil and gas industry
- Chemical industry
- Energy industry
- Food and beverage industry
- Paper industry

**Sensor:** stainless steel  
**Nominal pressure gauge:**  
 0 - 20 bar (0 - 290 psig)  
**Accuracy:** 0.075%  
**Medium temperature:**  
 -40 °C ... +100 °C  
 (-40 °F ... +212 °F)  
**Ambient temperature:**  
 -40 °C ... +85 °C (without display)  
 (-40 °F ... +185 °F)  
 -20 °C ... +65 °C (with display)  
 (-4 °F ... +149 °F)  
**Output:** 4 - 20 mA, HART®  
**Process connection:**  
 1/4" NPT (internal), 1/2" NPT;  
 M20 x1.5  
**Protection:** IP67

- Ex ia version\*
- LCD display
- HASTELLOY® sensor





HUNGARIAN  
PARALYMPIC  
COMMITTEE

*NIVELCO – official sponsor  
of the Hungarian Paralympic Team*

**NIVELCO PROCESS CONTROL CO.**

H-1043 Budapest, Dugonics u. 11.  
Tel.: (36-1) 8890-100  
Fax: (36-1) 8890-200  
E-mail: [sales@nivelco.com](mailto:sales@nivelco.com)  
[www.nivelco.com](http://www.nivelco.com)

Nivelco Messtechnik GmbH  
A-1020 Wien,  
Untere Donaustraße 13–15.  
Tel.: (36-1) 8890-100  
Fax: (36-1) 8890-200  
E-mail: [austria@nivelco.com](mailto:austria@nivelco.com)

Nivelco USA LLC  
1300 Iroquois Drive  
Suite 205  
Naperville, IL 60563  
Tel.: 1-630-848-2100  
E-mail: [usa@nivelco.com](mailto:usa@nivelco.com)

РОССИЯ Представительство  
-АО NIVELCO-  
142191 Россия,  
г. Троицк (Моск. Обл.),  
ул. Лесная, 4Б, офис 301  
(Дом предпринимателей)  
Tel.: 7-499-922-3382  
Fax: 7-499-922-3382  
E-mail: [russia@nivelco.com](mailto:russia@nivelco.com)

Nivelco Mjerna Tehnika d.o.o.  
Prolaz M. K. Kozulić 2/4,  
Rijeka  
Tel.: 385-51-587-034  
Fax: 385-51-587-447  
E-mail: [croatia@nivelco.com](mailto:croatia@nivelco.com)

SC Nivelco Tehnica  
Măsurării SRL.  
Sângeorgiu de Mureș – 547530,  
str. Narciselor nr. 17  
Tel.: (00-40) 40-265-306192  
Fax: (00-40) 40-265-306192  
E-mail: [romania@nivelco.com](mailto:romania@nivelco.com)

Nivelco Bohemia s.r.o.  
664 57 Měnin, Brno-venkov  
Měnin 523,  
Tel.: (420) 775 554 176  
Tel.: (420) 775 554 179  
E-mail: [bohemia@nivelco.com](mailto:bohemia@nivelco.com)

Nivelco Poland Sp.z.o.o.  
ul. Chorzowska 44b  
PL-44100 Gliwice  
Tel.: (48-32) 270 3701  
Fax: (48-32) 270 3832  
E-mail: [poland@nivelco.com](mailto:poland@nivelco.com)

Nivelco Instruments India Pvt. Ltd.  
"MALHAR", Plot No 18, S.No. 2,  
Near Rajaram Bridge,  
Karve Nagar,  
411052, PUNE  
Tel.: 91-20-2547-8313  
Fax: 91-20-2547-8313  
E-mail: [india@nivelco.com](mailto:india@nivelco.com)





## GENERAL DESCRIPTION

---

In the world of industrial metrology, monitoring and controlling the pressure of fluids and gases and the processing of the measured results are high priorities.

NIVELCO covers the needs of several industries and application areas with the wide selection of the NIPRESS family.

## FEATURES OF THE NIPRESS DEVICE FAMILIES:

---

- Advanced pressure measuring technologies
- Relative and absolute pressure measurement
- Devices for nearly all medium
- Several accuracy classes
- Several mounting options
- Excellent overload resistance
- 2- and 3-wire systems
- Devices with lots of different electrical and process connections
- Solutions for rough conditions (aggressive medium, wide temperature range, dynamic pressure changes)
- Solutions for high hygiene requirements
- Excellent price/value ratio

## MAIN CATEGORIES OF THE NIPRESS DEVICE FAMILY:

---

- PRESSURE SWITCHES
- PRESSURE TRANSMITTERS
- DIFFERENTIAL PRESSURE TRANSMITTERS

## PRESSURE SWITCHES

- **Devices with or without display**
- **Measuring range: 0 – 600 bar (0 – 8700 psig)**

The **DK-100** and **DK-200** pressure switches electronic pressure switches can be used in hydraulic and pneumatic applications for monitoring and controlling the pressure with switching outputs. The devices are easily programmable either by the optionally available tools P-Set (PC software and programming adapter) or via the programming device P6.

Due to the simple handling as well as the variety of software features (switching points and hysteresis freely configurable, delay function, min/max-value data storage, display and analogue output signal scalable, etc.) the **DK-300**, **DK-400** and **DK-500** intelligent switches are especially suitable as a pressure switch for general plant and machine construction and for the processing industry.

### MAIN APPLICATION AREAS:

mobile hydraulics, dry running protection, flow monitoring, grease monitoring, gas compressors, test and construction engineering.

## PRESSURE TRANSMITTERS

- **Measurement of vacuum, overpressure and absolute pressure**
- **Measuring range: 0 – 2000 bar (0 – 29007 psig)**

The wide selection of pressure measuring technologies, housing materials (stainless steel, plastics) provides possibility to complete almost all gas and fluid pressure measurement tasks. Their design, high overload capability and the possibility to install the units in any physical position allows for a wide range of industrial applications.

### MAIN APPLICATION AREAS:

HVAC, hydraulics, pneumatics, mechanical and plant engineering, energy industry, food and beverage industry, pharmaceutical industry, chemical industry, oil and gas industry.

## DIFFERENTIAL PRESSURE TRANSMITTERS

- **For differential pressure measurement**
- **Measuring range: 0 – 70 bar (0 – 1015 psig)**

Thanks to different sensor technologies combined with compact aluminium die-cast cases or plastic housings, our differential pressure transmitters may be used for numerous fluids and gases, e. g. for monitoring ventilation ducts, filters and fans in HVAC areas as well as for level measurement in closed pressurized tanks.

### MAIN APPLICATION AREAS:

HVAC, mechanical and plant engineering, oil and gas industry, chemical industry, energy industry, food and beverage industry.